

ROSE Data Server – Maintenance Parts Now Available

Keep your infrastructure running smoothly for the long term with official maintenance components for the RDS2216:

DPS-550AB-36G

Replacement hot-swap power supply unit

Output voltage: 12V / Output power: 550W

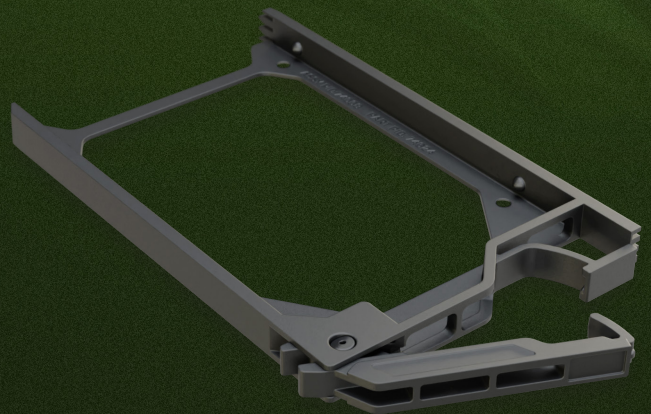
Designed to match the RDS2216's energy-efficient architecture, this hot-swap PSU helps maintain the platform's low power consumption and reduced heat output — fully aligned with the eco-friendly vision behind the Rose Data Server.



CADDY

– 10-pack of NVMe drive trays

Essential disk inserts for quick and secure mounting. Accidents happen, but you can be prepared and one step ahead.



**WANT TO
LEARN MORE?**

